



Falcon
lettings

01752 600828

26 Wesley Place

Mutley, Plymouth, PL3 4RF

£1,050 pcm



In Brief

Delightful two bedroom townhouse Available now

Quiet setting minutes walking distance of Mutley Plain

Living room and open plan Dining room

One large double and one smaller double bedroom

Kitchen, utility and bathroom

Double glazed and centrally heated.

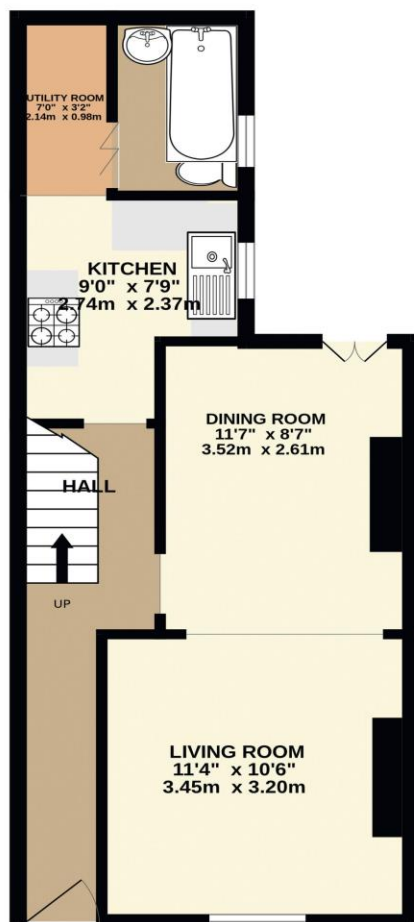
Courtyard - at the rear of the property

EPC E and Council Tax Band B

Holding Deposit of £242 and Total Deposit of £1,211

Landlord Managed

GROUND FLOOR
396 sq.ft. (36.8 sq.m.) approx.



1ST FLOOR
294 sq.ft. (27.3 sq.m.) approx.



TOTAL FLOOR AREA : 690 sq.ft. (64.1 sq.m.) approx.
Made with Metropix ©2023

www.falconlettings.com

8 Mannamead Road Mutley Plymouth PL4 7AA

Email: lettings@falconproperty.com

